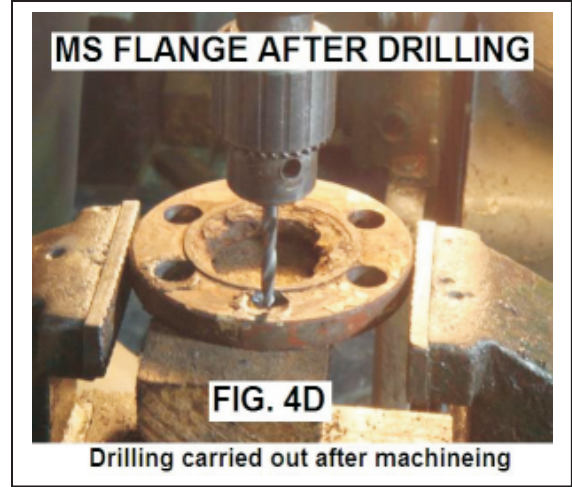
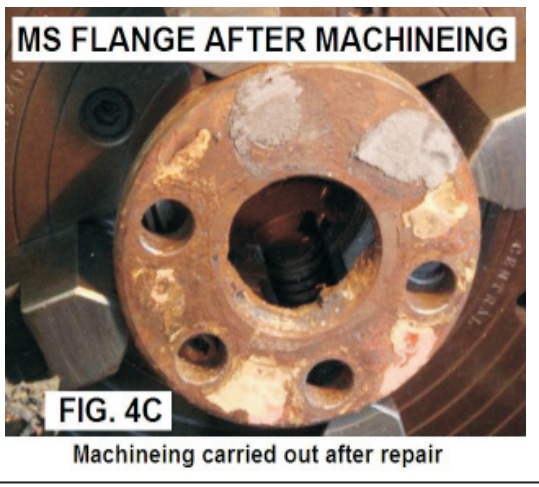
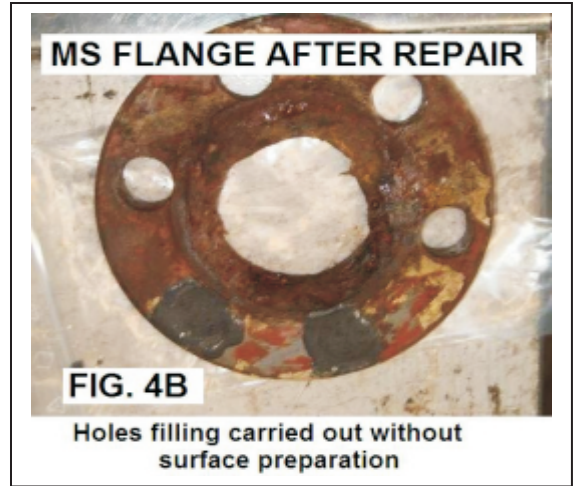
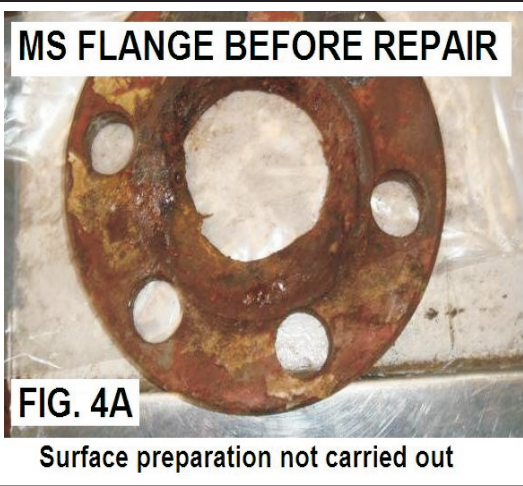
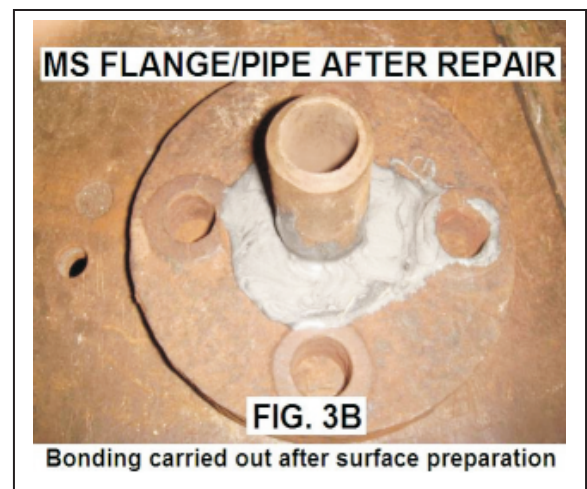
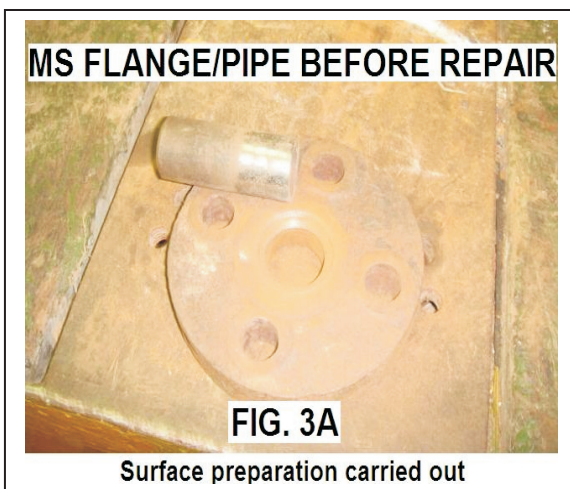
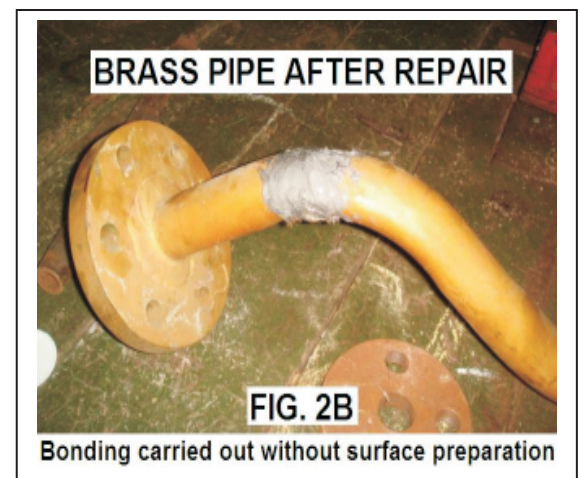
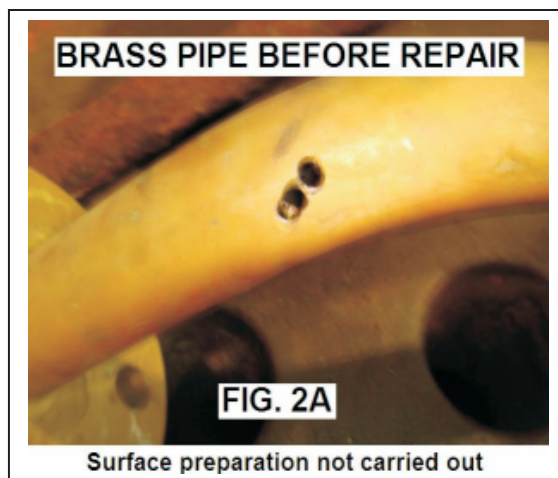
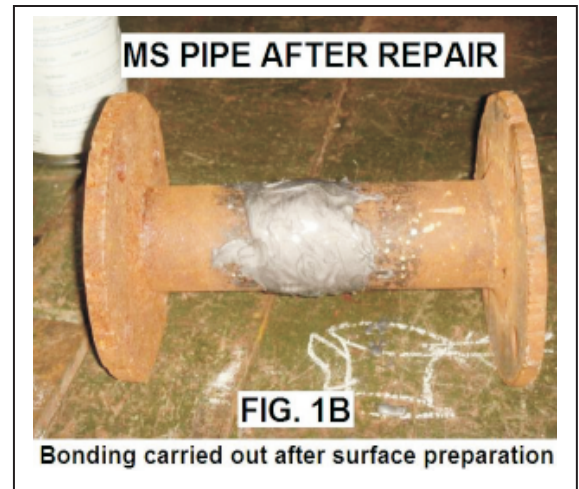
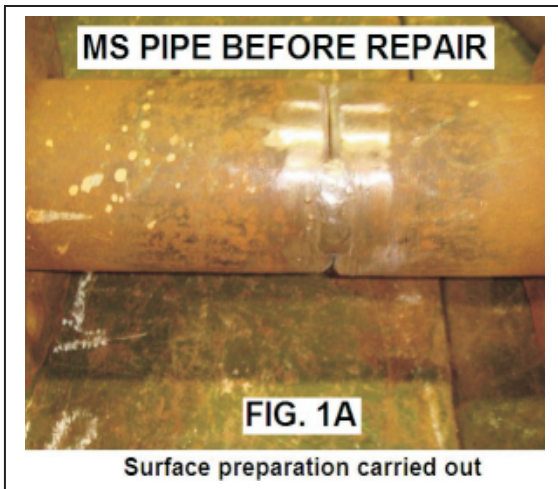


**COLD WELDING TRIALS CARRIED OUT AT
FABRICATION SHOP AT NAVAL DOCKYARD MUMBAI
ON OCTOBER 06 & 07 2009**

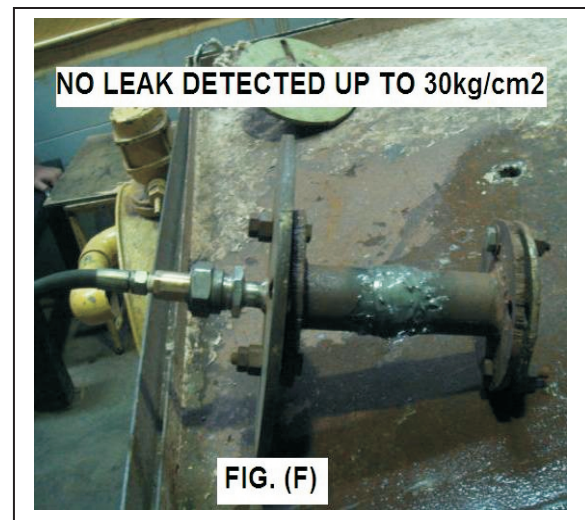
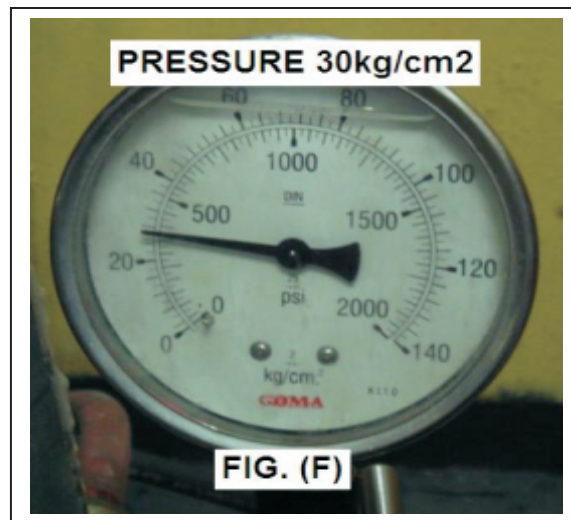
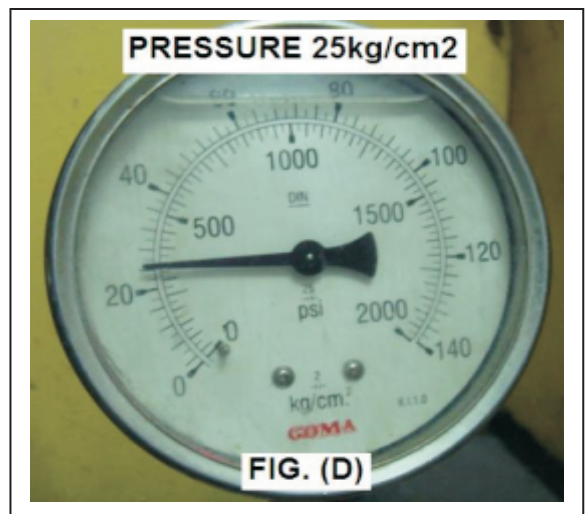
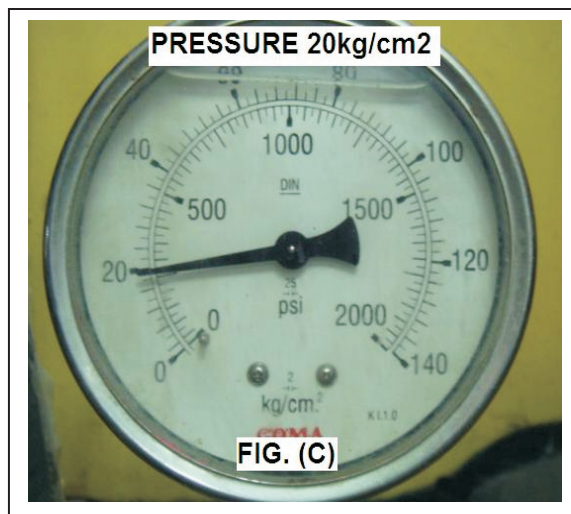
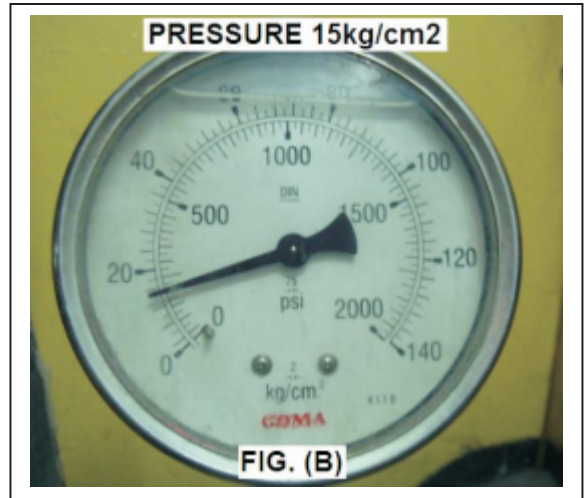
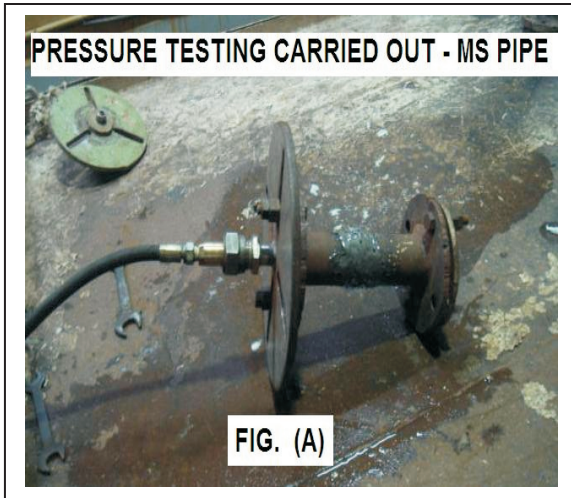




**COLD WELDING TRIALS CARRIED OUT AT
M(SYS)CENTER NO 37 AT NAVAL DOCKYARD
MUMBAI ON OCTOBER 06 2009**



PRESSURE TESTING TRIALS CARRIED OUT AT
M(SYS)CENTER NO 37 AT NAVAL DOCKYARD
MUMBAI ON OCTOBER 08 2009



**COLD WELDING TRIALS CARRIED OUT AT
M(YS)CENTER NO 63 AT NAVAL DOCKYARD
MUMBAI ON OCTOBER 07 2009**

